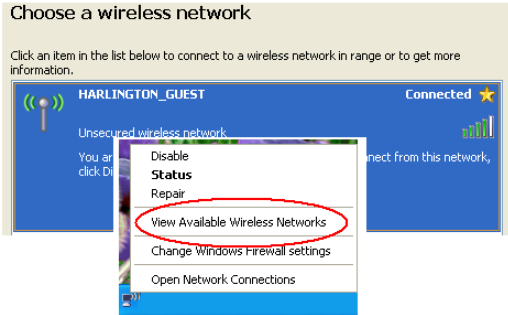


# Connecting to the Harlington Guest Wireless

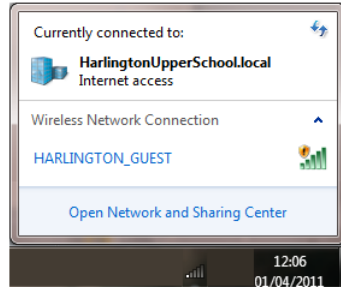
To connect to the guest wireless choose to view available wireless networks. You should see “HARLINGTON\_GUEST” listed, to connect just double click this network.

The current password is: knowthyself

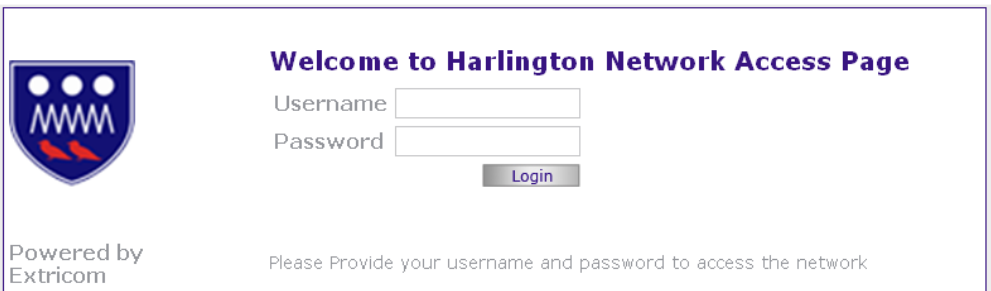
Windows XP



Windows Vista/7



Once you have connected to the guest wireless open Internet Explorer and you should see the following page:



The username and password for the guest login is as follows:

Username: wifiguest

Password: guestwireless

Once you see the message “Login Successful” please just browse to the website you require.